

## HOLLOW CORE BEARING ON INVERTED TEE BEAM WITH WELDED CONNECTION

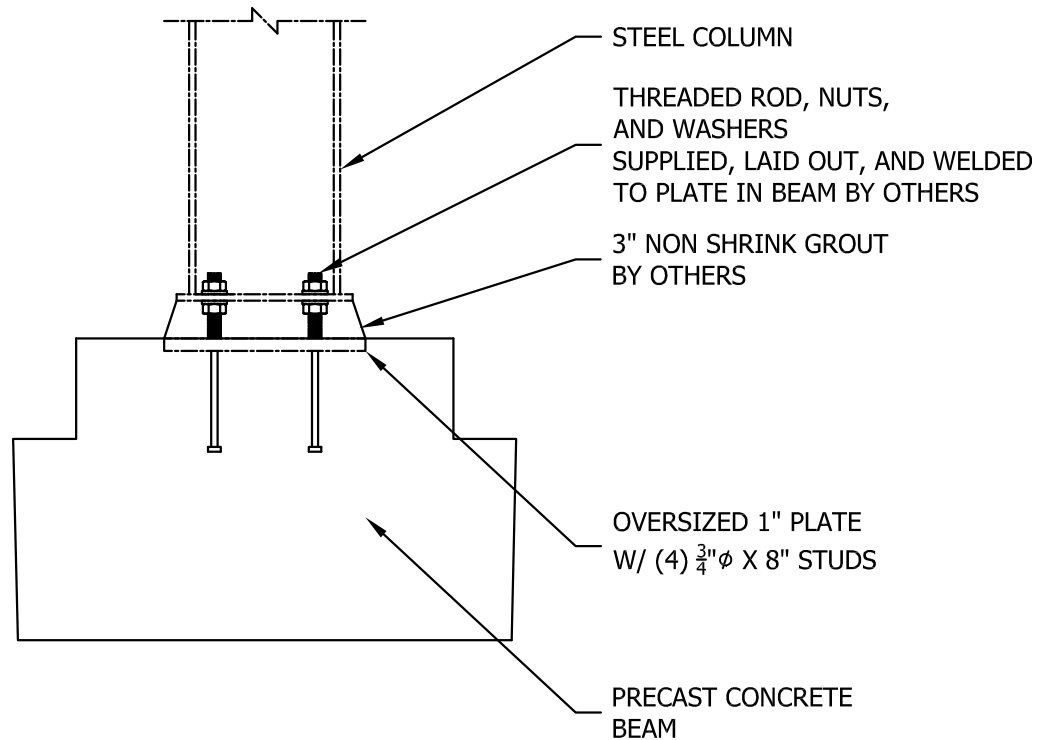


**MID-STATES**  
CONCRETE INDUSTRIES

500 SOUTH PARK AVENUE  
SOUTH BELOIT, IL 61080

P 608.364.1072  
800.236.1072  
F 815.389.2339  
msprecast.com

**3.4003**



## STEEL COLUMN TO PRECAST BEAM WELDED CONNECTION

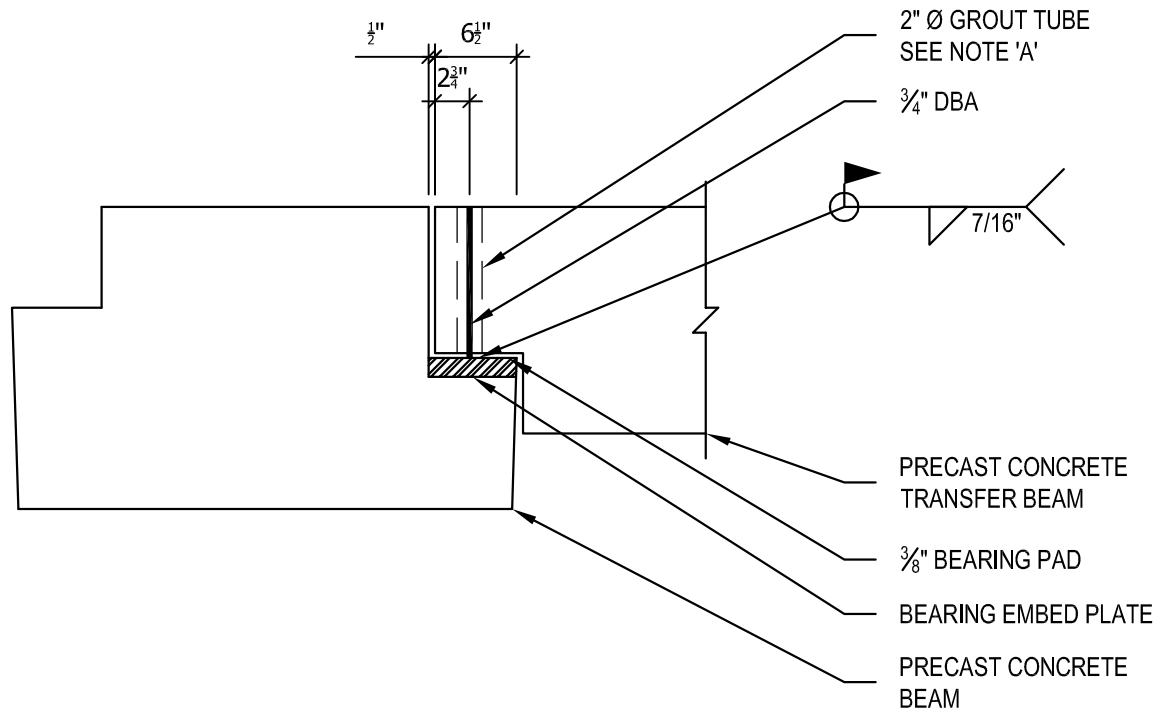


**MID-STATES**  
CONCRETE INDUSTRIES

500 SOUTH PARK AVENUE  
SOUTH BELOIT, IL 61080

P 608.364.1072  
800.236.1072  
F 815.389.2339  
msprecast.com

**3.4020**



## PRECAST TRANSFER BEAM WITH DAP

INSTALLATION NOTE 'A'  
 GROUT TUBE TO BE MATED WITH  $\frac{3}{4}"$  Ø ROD.  
 GROUT TUBE TO BE FILLED WITH 6" SAND MINIMUM.  
 THE REMAINDER TO BE GROUTED.

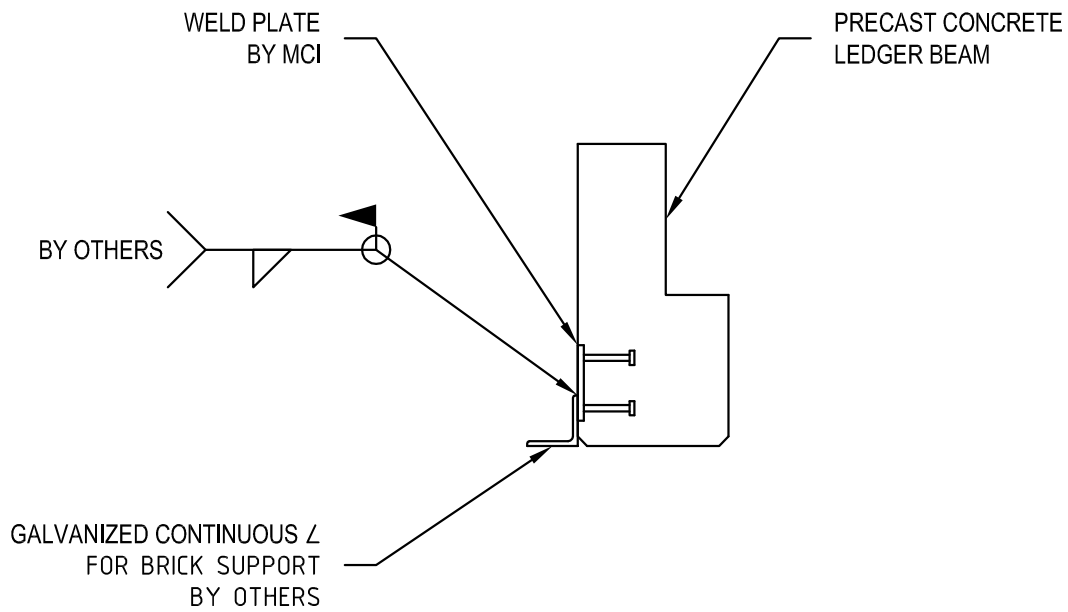


**MID-STATES**  
 CONCRETE INDUSTRIES

500 SOUTH PARK AVENUE  
 SOUTH BELOIT, IL 61080

P 608.364.1072  
 800.236.1072  
 F 815.389.2339  
 msprecast.com

**3.4024**



## GARAGE DOOR PRECAST LEDGER BEAM

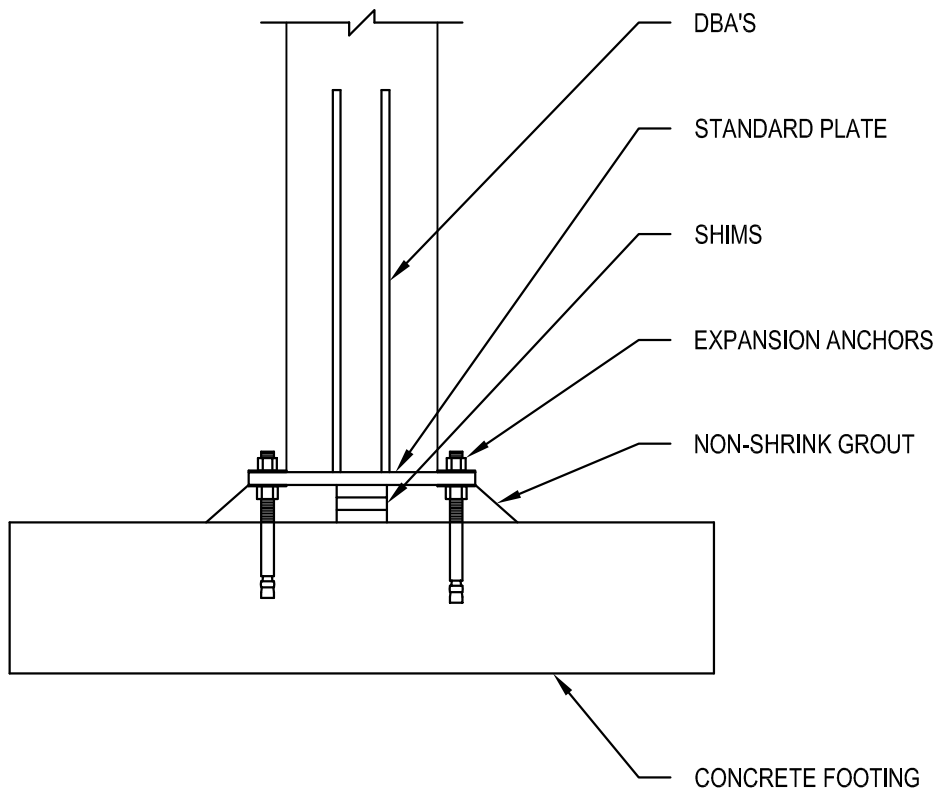


**MID-STATES**  
CONCRETE INDUSTRIES

500 SOUTH PARK AVENUE  
SOUTH BELOIT, IL 61080

P 608.364.1072  
800.236.1072  
F 815.389.2339  
msprecast.com

**3.4025**



## COLUMN TO FOOTING CONNECTION

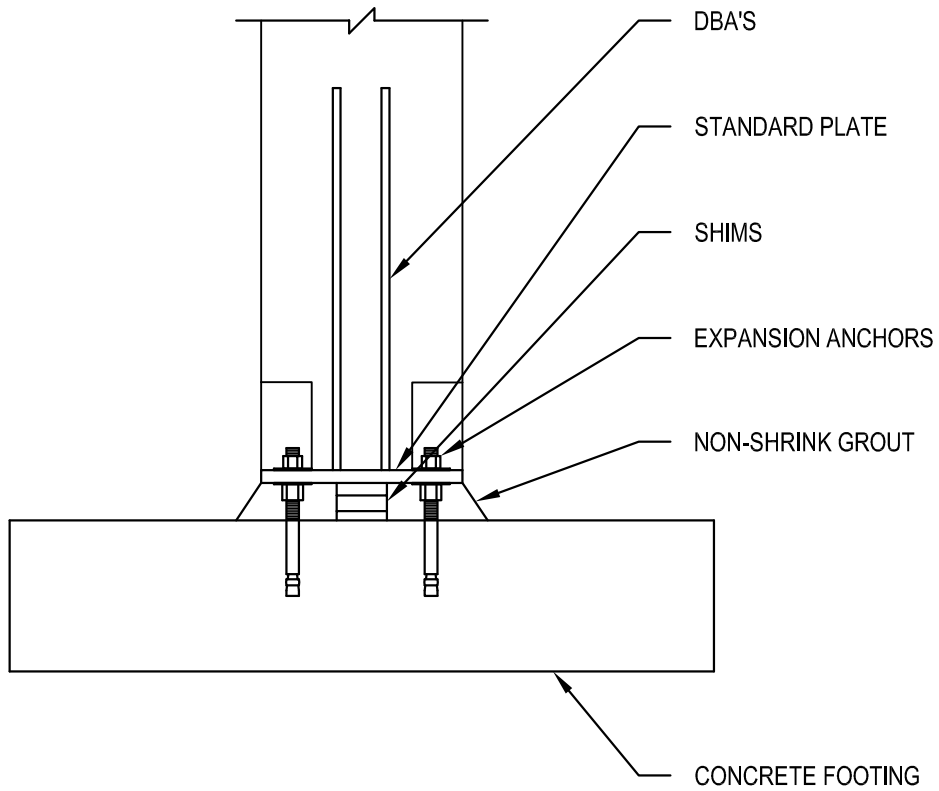


**MID-STATES**  
CONCRETE INDUSTRIES

500 SOUTH PARK AVENUE  
SOUTH BELOIT, IL 61080

P 608.364.1072  
800.236.1072  
F 815.389.2339  
msprecast.com

4.4001



## COLUMN TO FOOTING CONNECTION

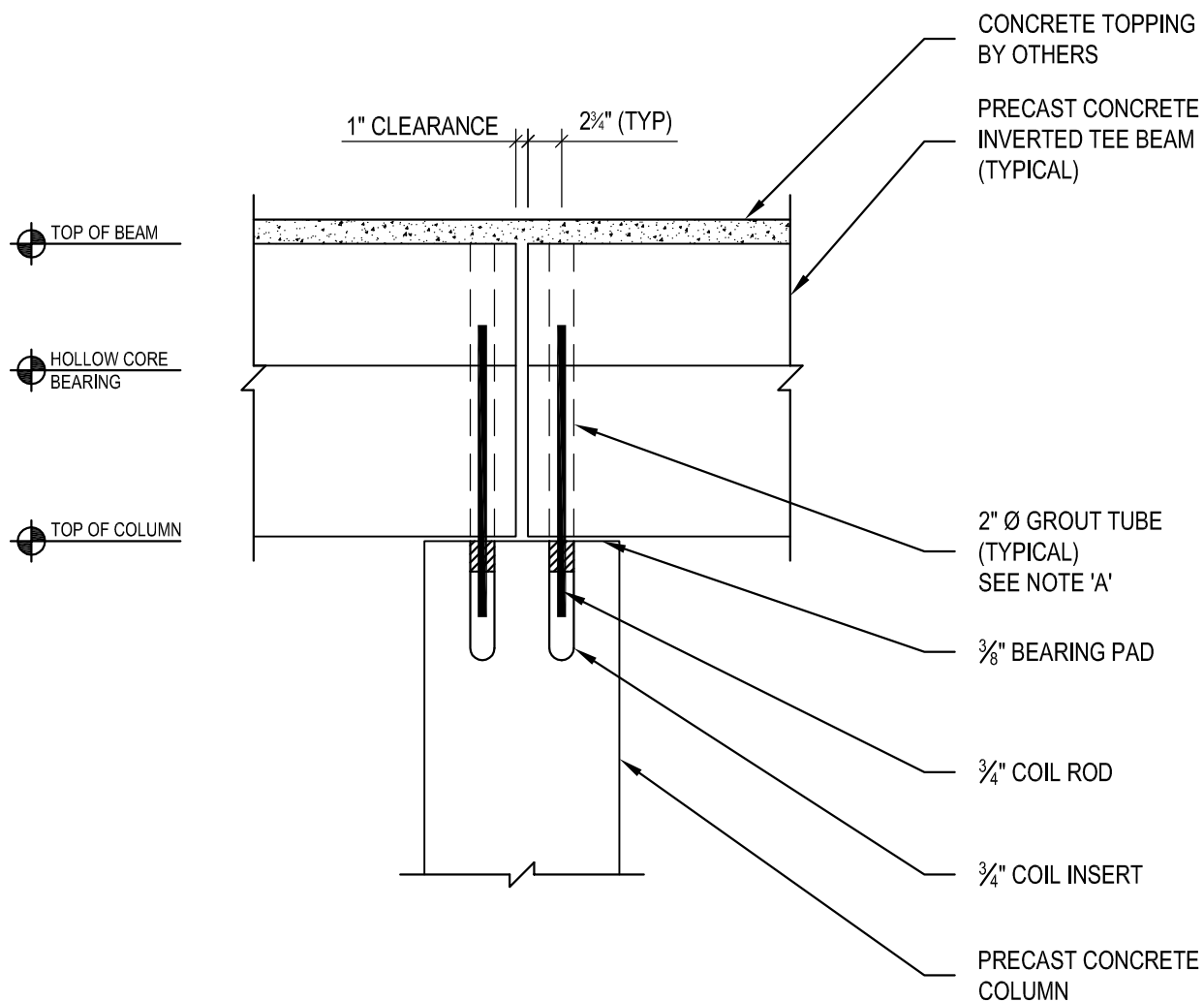


**MID-STATES**  
CONCRETE INDUSTRIES

500 SOUTH PARK AVENUE  
SOUTH BELOIT, IL 61080

P 608.364.1072  
800.236.1072  
F 815.389.2339  
msprecast.com

**4.4002**



## DOUBLE PRECAST BEAMS BEARING ON COLUMN

INSTALLATION NOTE 'A'  
 GROUT TUBE TO BE MATED WITH 3/4" Ø ROD.  
 GROUT TUBE TO BE FILLED WITH 6" SAND MINIMUM.  
 THE REMAINDER TO BE GROUTED.

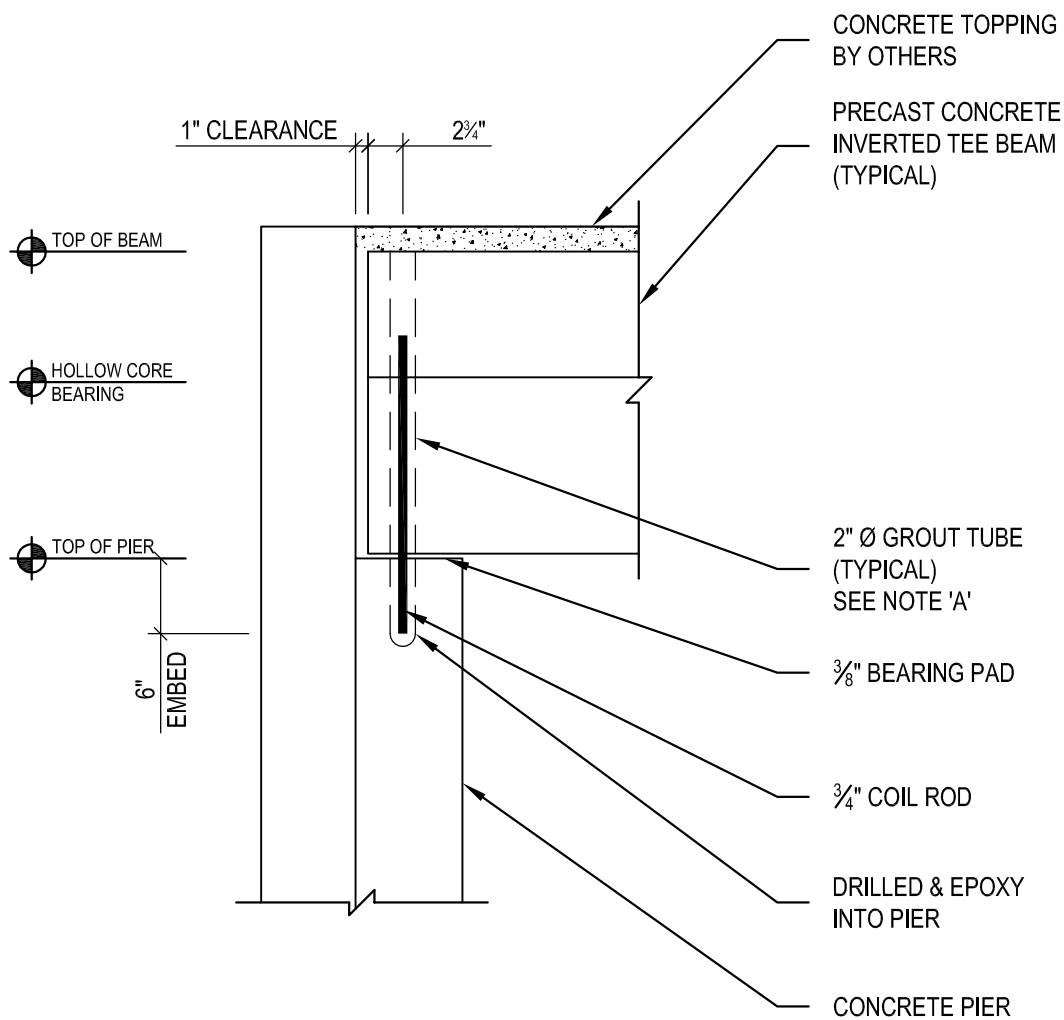


**MID-STATES**  
 CONCRETE INDUSTRIES

500 SOUTH PARK AVENUE  
 SOUTH BELOIT, IL 61080

P 608.364.1072  
 800.236.1072  
 F 815.389.2339  
 msprecast.com

**4.4003**



## PRECAST BEAM BEARING ON CONCRETE PIER

INSTALLATION NOTE 'A'  
GROUT TUBE TO BE MATED WITH 3/4" Ø ROD.  
GROUT TUBE TO BE FILLED WITH 6" SAND MINIMUM.  
THE REMAINDER TO BE GROUTED.



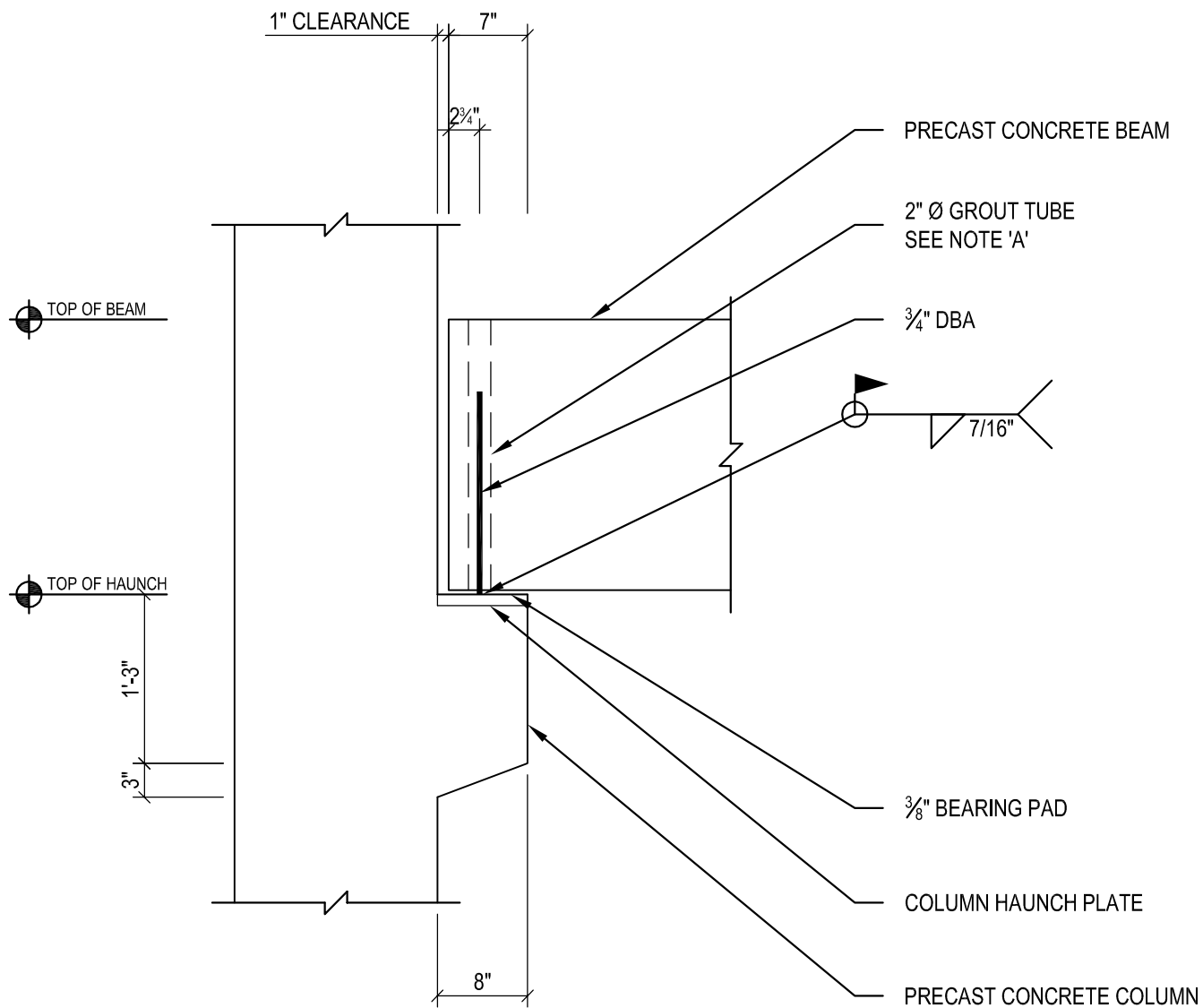
**MID-STATES**  
CONCRETE INDUSTRIES

500 SOUTH PARK AVENUE  
SOUTH BELOIT, IL 61080

P 608.364.1072  
800.236.1072  
F 815.389.2339  
msprecast.com

**4.4004**





## PRECAST BEAM BEARING ON COLUMN HAUNCH

INSTALLATION NOTE 'A'  
 GROUT TUBE TO BE MATED WITH 3/4" Ø ROD.  
 GROUT TUBE TO BE FILLED WITH 6" SAND MINIMUM.  
 THE REMAINDER TO BE GROUTED.



**MID-STATES**  
 CONCRETE INDUSTRIES

500 SOUTH PARK AVENUE  
 SOUTH BELOIT, IL 61080

P 608.364.1072  
 800.236.1072  
 F 815.389.2339  
 msprecast.com

**4.4005**