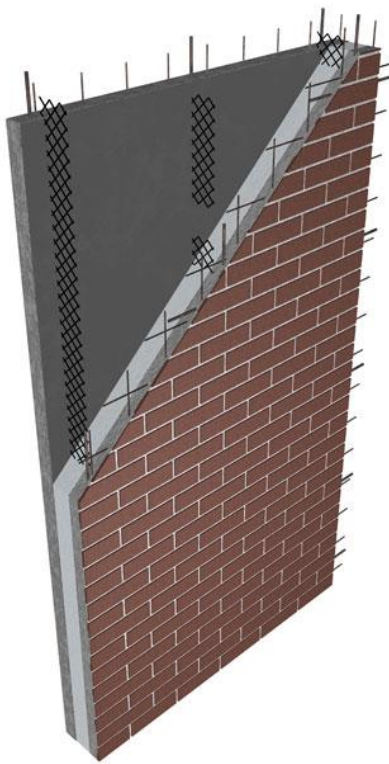




## Are CarbonCast High Performance Insulated Wall Panels Right For Your Next Project?



### [By AltusGroup](#)

By using C-GRID carbon fiber grid as a shear connector between the inner and outer wythes of concrete, CarbonCast High Performance Insulated Wall Panels deliver an exterior wall panel with full composite action and continuous insulation.

### Thermally Efficient

CarbonCast High Performance Insulated Wall Panels are composed of two concrete wythes separated by continuous insulation. With very low thermal conductivity, the high-strength C-GRID connectors help deliver a sandwich wall panel with insulation values up to R-37 depending on thickness and [type of foam insulation](#).

Continuous insulation helps you [meet ASHRAE 90.1 requirements](#) and, more importantly, save energy to heat

and cool the building.

### Full Composite Action

Extensive research has proven the outstanding load-bearing performance of CarbonCast High Performance Insulated Wall Panels. The C-GRID shear trusses can render a panel with

full structural composite action.

For example, a panel with a 4" (102mm) of insulation between two 2" (51mm) concrete wythes will behave structurally as if it were an 8" (203mm) solid panel.

[Keep reading >>](#)

---

## **Proud Partner: Wright & Wagner in Downtown Beloit, Wisc.**



Mid-States Concrete Industries is so proud to serve as the precaster on the [Wright & Wagner](#) project in downtown Beloit, Wisc.

We provided precast components for five stories of the building, including roughly 76,000 square feet of Hollowcore Plank and Solid Slabs; multiple floors of Precast Beams; multiple floors of Precast Columns; Wall Panels at both the parking level (with a form liner finish to match the first Wright & Wagner building) and stair shafts; four Precast Balconies; and multiple floors utilizing the DELTABEAM.

Precast concrete and the DELTABEAM were a fantastic building material that helped achieve the industrial aesthetic the building owner was looking for. All components were able to be left

exposed and painted offering true design flexibility and aesthetic versatility.

Watch your inboxes in Q1 2024 for a detailed project profile, with input from both [Corporate Contractors Inc.](#) and [JLA Architects](#) as well as Mid-States Concrete Industries; beautiful pictures of the project; and amazing video footage. We can't wait to share the many benefits precast concrete provided on this project and showcase an amazing new multi-family residential building in the community.

---

## Precast Chalk Talk: Episode 50



In this episode of Precast Chalk Talk, President Hagen Harker visits a jobsite and discusses the importance of safety when it comes to working at heights of 6-feet and above.

[Watch Episode >>](#)

Questions? Comments? Ideas for a future episode? [Email us >>](#)

[Find every episode of Precast Chalk Talk here >>](#)

---

## About Mid-States Concrete Industries

Since 1946, we have produced structural and architectural precast concrete systems that provide our partners with high quality building materials with sustaining performance.

The biggest part of our story is you - our clients. For more than 75 years, you have trusted us to help with your projects. Each project offers its own unique goals and opportunities. We partner with you to find the right solutions for your project.

[Learn more >>](#)



**Jeremy Olivotti**  
Vice President of  
Preconstruction

608.751.1474 (c)  
800.236.1072 (w)



**MID-STATES**  
CONCRETE INDUSTRIES

[Blog](#) [YouTube](#) [Twitter](#) [LinkedIn](#) [Facebook](#)

500 South Park Ave., South Beloit, IL 61080, United States

[unsubscribe from all emails](#) [update subscription preferences](#)