



MID-STATES
CONCRETE INDUSTRIES

500 South Park Avenue

South Beloit, IL 61080

800.236.1072

msprecast.com

16" X 48" HOLLOW CORE

(2 HOUR FIRE RATING)

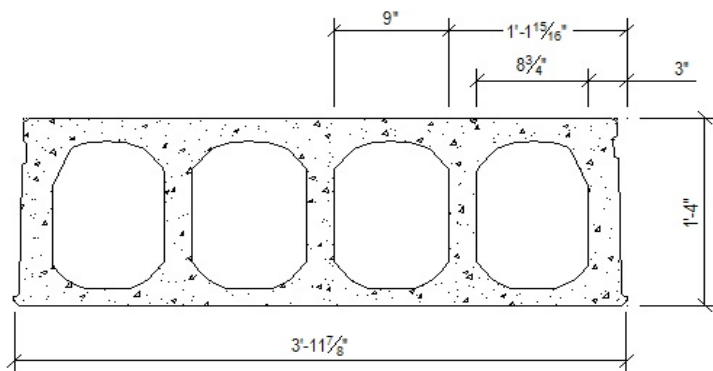
SAFE LOAD TABLE

Standard Designation	#/Size of 7-Wire strand	Strand Area Sq.In.	Mu in Ft.-Kips per unit	SIMPLE SPAN IN FEET-CENTER TO CENTER OF END BEARINGS																															
				30	31	32	33	34	35	36	37	38	39	40	41	42	43	44	45	46	47	48	49	50	51	52	53	54	55	56	57	58	59	60	
1.75-28910	2-1/2,9-.6	2.259	575.7	423	405	390	377	364	352	341	330	320	310	296	281	269	256	244	233	222	213	203	196	188	180	174	166	159	150	142	134	126	119	111	
1.75-28610	2-1/2,6-.6	1.608	422.5	158	151	144	137	131	125	120	114	109	105	100	96	92	88	84	81	77	74	71	68	65	62	60	57	55	52						

UNIFORMLY DISTRIBUTED SUPERIMPOSED LOAD IN LBS. PER SQ. FT.

(Includes the live load plus dead load that is in addition to the weight of the grouted slabs in place.)

FOR LOADS & SPANS NOT SHOWN CONTACT MID-STATES CONCRETE INDUSTRIES



HOLLOW CORE: F'c = 9000PSI, WEIGHT = 100 PSF

1- Dead Load, 100 psf grouted weight of structural unit.

2- Tabulated loads are based on ACI318-14 where $M_u = 1.2 M_d + 1.6 M_L$ and with all loads superimposed on the structural section considered as live load.

3- Camber is a result of the design rather than a design requirement. Heavy superimposed loads & / or long spans may cause excessive camber.

Contact Mid-States Concrete Industries for more specific camber information.

4- Loads shaded in blue are governed by ACI shear section 7.6.3.1. Lower strand pattern shown above reflects shear allowable without added solid at the ends. Higher strand pattern shows capacities that can be developed after two solid voids added at each end for 3 ft. length, at time of casting.

5- All strand stressed to 65% of ultimate.





MID-STATES
CONCRETE INDUSTRIES

500 South Park Avenue

South Beloit, IL 61080

800.236.1072

msprecast.com

16" X 48" HOLLOW CORE

(3 HOUR FIRE RATING)

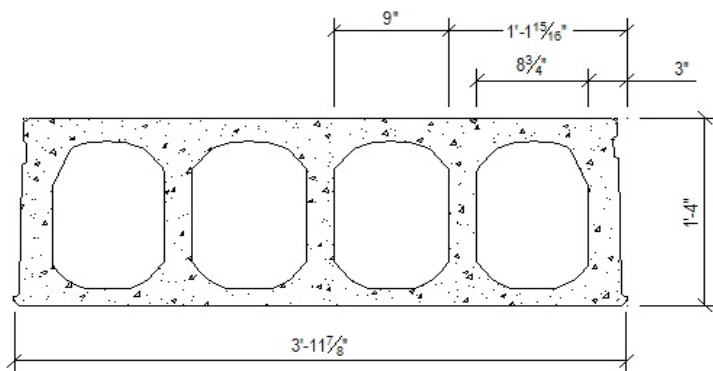
SAFE LOAD TABLE

Standard Designation	#/Size of 7-Wire strand	Strand Area Sq.In.	Mu in Ft.-Kips per unit	SIMPLE SPAN IN FEET-CENTER TO CENTER OF END BEARINGS																															
				30	31	32	33	34	35	36	37	38	39	40	41	42	43	44	45	46	47	48	49	50	51	52	53	54	55	56	57	58	59	60	
1.75-28910	2-1/2,9-.6	2.259	575.7	423	405	390	377	352	326	303	281	261	243	226	210	196	182	169	157	146	136	126	117	108	100	93	86	79	72	66	61	55	50	45	
1.75-28610	2-1/2,6-.6	1.608	422.5	158	151	144	137	131	125	120	114	109	105	100	96	92	88	84	81	77	74	71	66	59	53	47	42								

UNIFORMLY DISTRIBUTED SUPERIMPOSED LOAD IN LBS. PER SQ. FT.

(Includes the live load plus dead load that is in addition to the weight of the grouted slabs in place.)

FOR LOADS & SPANS NOT SHOWN CONTACT MID-STATES CONCRETE INDUSTRIES



HOLLOW CORE: F'c = 9000PSI, WEIGHT = 100 PSF

1- Dead Load, 100 psf grouted weight of structural unit.

2- Tabulated loads are based on ACI318-14 where $M_u = 1.2 M_d + 1.6 M_L$ and with all loads superimposed on the structural section considered as live load.

3- Camber is a result of the design rather than a design requirement. Heavy superimposed loads & / or long spans may cause excessive camber.

Contact Mid-States Concrete Industries for more specific camber information.

4- Loads shaded in blue are governed by ACI shear section 7.6.3.1. Lower strand pattern shown above reflects shear allowable without added solid at the ends. Higher strand pattern shows capacities that can be developed after two solid voids added at each end for 3 ft. length, at time of casting.

5- All strand stressed to 65% of ultimate.





MID-STATES
CONCRETE INDUSTRIES

500 South Park Avenue

South Beloit, IL 61080

800.236.1072

msprecast.com

16" X 48" HOLLOW CORE

(4 HOUR FIRE RATING)

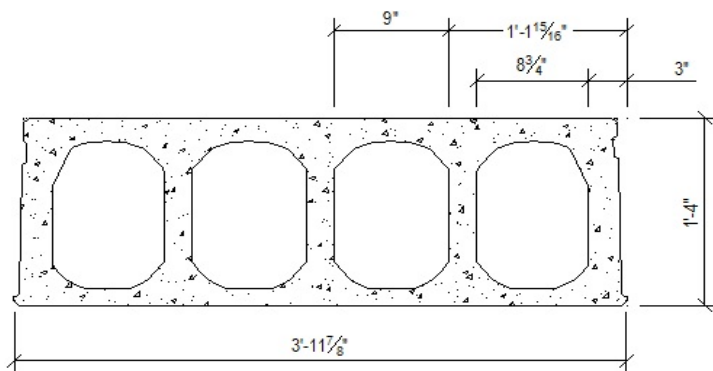
SAFE LOAD TABLE

Standard Designation	#/Size of 7-Wire strand	Strand Area Sq.In.	Mu in Ft.-Kips per unit	SIMPLE SPAN IN FEET-CENTER TO CENTER OF END BEARINGS																															
				30	31	32	33	34	35	36	37	38	39	40	41	42	43	44	45	46	47	48	49	50	51	52	53	54	55	56	57	58	59	60	
1.75-28910	2-1/2,9-.6	2.259	575.7	334	306	281	258	237	218	201	185	170	156	144	132	121	111	101	92	84	76	69	62	56	50	44	39								
1.75-28610	2-1/2,6-.6	1.608	422.5	158	151	144	137	131	125	120	114	109	105	95	85	77	69	61	54	47	41														

UNIFORMLY DISTRIBUTED SUPERIMPOSED LOAD IN LBS. PER SQ. FT.

(Includes the live load plus dead load that is in addition to the weight of the grouted slabs in place.)

FOR LOADS & SPANS NOT SHOWN CONTACT MID-STATES CONCRETE INDUSTRIES



HOLLOW CORE: F'c = 9000PSI, WEIGHT = 100 PSF

1- Dead Load, 100 psf grouted weight of structural unit.

2- Tabulated loads are based on ACI318-14 where $M_u = 1.2 M_d + 1.6 M_L$ and with all loads superimposed on the structural section considered as live load.

3- Camber is a result of the design rather than a design requirement. Heavy superimposed loads & / or long spans may cause excessive camber.

Contact Mid-States Concrete Industries for more specific camber information.

4- Loads shaded in blue are governed by ACI shear section 7.6.3.1. Lower strand pattern shown above reflects shear allowable without added solid at the ends. Higher strand pattern shows capacities that can be developed after two solid voids added at each end for 3 ft. length, at time of casting.

5- All strand stressed to 65% of ultimate.

