



1-800-236-1072
www.msprecast.com

Mid-States Concrete Industries **flexicore**

8"X24" HOLLOWCORE

2" STRUCTURAL TOPPING
(3 HOUR FIRE RATING)



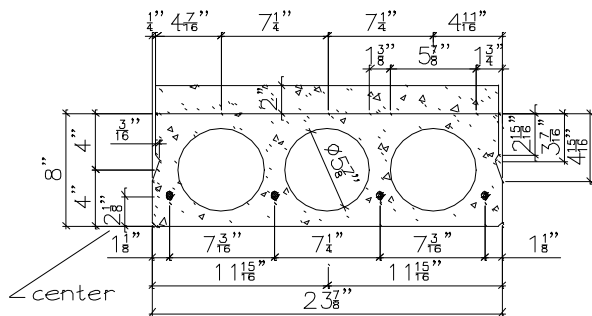
COMPOSITE DESIGN
SAFE LOAD TABLE

Standard Designation	#/Size of Wire strand	Strand Area Sq.In.	Mu in Ft.-Kips per unit	SIMPLE SPAN IN FEET-CENTER TO CENTER OF END BEARINGS																																			
				10	11	12	13	14	15	16	17	18	19	20	21	22	23	24	25	26	27	28	29	30	31	32	33	34	35	36	37	38	39	40					
*2.0-48S	4-1/2S, 270K	0.668	85.46	610	549	497	454	416	384	356	331	309	289	271	255	240	227	215	203	186	<u>165</u>	<u>146</u>	<u>128</u>	<u>112</u>	<u>97</u>	<u>84</u>	<u>72</u>	<u>62</u>	<u>52</u>	<u>42</u>	<u>34</u>	<u>26</u>							
2.0-48	4-1/2	0.576	71.34										276	258	242	227	214	197	174	154	136	120	106	93	82	71	62	53	45	38	32	26	20						
2.0-47	4-7/16	0.432	55.92					374	345	319	296	266	230	200	173	151	131	114	98	85	72	62	52	43	35	28	21												
2.0-46	4-3/8	0.320	42.86	551	495	448	408	350	294	249	211	179	152	130	110	93	78	65	53	43	34	26																	
2.0-45	4-5/16	0.232	31.92	539	431	349	285	235	194	160	133	109	90	73	59	46	35	26																					

UNIFORMLY DISTRIBUTED SUPERIMPOSED LOAD IN LBS. PER SQ. FT.

(Includes the live load plus dead load that is in addition to the weight of the grouted slabs in place and 2" topping.)

FOR LOADS & SPANS NOT SHOWN CONTACT MID-STATES CONCRETE INDUSTRIES at 1-800-236-1072



HOLLOWCORE- $f'c=5000$ psi, $Wt=57$ psf
GROUT- $f'c=5000$ psi

TOPPING- $f'c=4000$ psi, $Wt=25$ psf

- 1- Dead Load, 82 psf grouted weight of structural unit.
- 2- Tabulated loads are based on ACI318-02 where $M_u=1.4 M_d+1.7M_L$ and with all loads superimposed on the structural section considered as live load.
- 3- Camber is a result of the design rather than a design requirement. Heavy superimposed loads & / or long spans may cause excessive camber. Contact Mid-States Concrete Industries for more specific camber information.
- 4- Loads to the left of the solid stepped line are governed by shear
- * 5- 6000 psi concrete when using 4-1/2s,270k
- 6- Loads underlined are controlled by permissible flexural tension at service loads.