



# Mid-States Concrete Industries **flexicore**

## 6"X24" HOLLOWCORE

(1 HOUR FIRE RATING)



1-800-236-1072  
www.msprecast.com

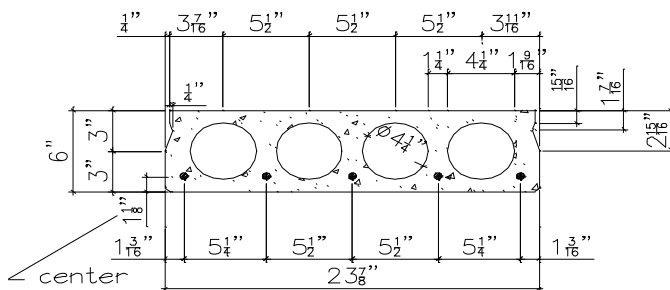
**SAFE LOAD TABLE**

Standard Designation	#/Size of Wire strand	Strand Area Sq.In.	Mu in Ft.-Kips per unit	SIMPLE SPAN IN FEET-CENTER TO CENTER OF END BEARINGS																																				
				10	11	12	13	14	15	16	17	18	19	20	21	22	23	24	25	26	27	28	29	30	31	32	33	34	35	36	37	38	39	40						
1.0-2627	2-3/8,2-7/16	0.376	29.42						239	222	199	173	151	132	115	101	89	78	68	59																				
1.0-46	4-3/8	0.320	25.63	378	340	309	282	259	225	193	165	143	124	107	93	81	70	61	52	45																				
1.0-45	4-5/16	0.232	19.27	378	326	267	221	184	155	130	110	94	79	67	57	48	40	33	27	21																				

### UNIFORMLY DISTRIBUTED SUPERIMPOSED LOAD IN LBS. PER SQ. FT.

(Includes the live load plus dead load that is in addition to the weight of the grouted slabs in place.)

**FOR LOADS & SPANS NOT SHOWN CONTACT MID-STATES CONCRETE INDUSTRIES at 1-800-236-1072**



HOLLOWCORE -  $f'_c = 5000$  psi,  $W_t = 45$  psf  
GROUT -  $f'_c = 5000$  psi

- 1- Dead Load, 45 psf grouted weight of structural unit.
- 2- Tabulated loads are based on ACI318-02 where  $M_u = 1.4 M_d + 1.7 M_L$  and with all loads superimposed on the structural section considered as live load.
- 3- Camber is a result of the design rather than a design requirement. Heavy superimposed loads & / or long spans may cause excessive camber. Contact Mid-States Concrete Industries for more specific camber information.
- 4- Loads to the left of the solid stepped line are governed by shear.