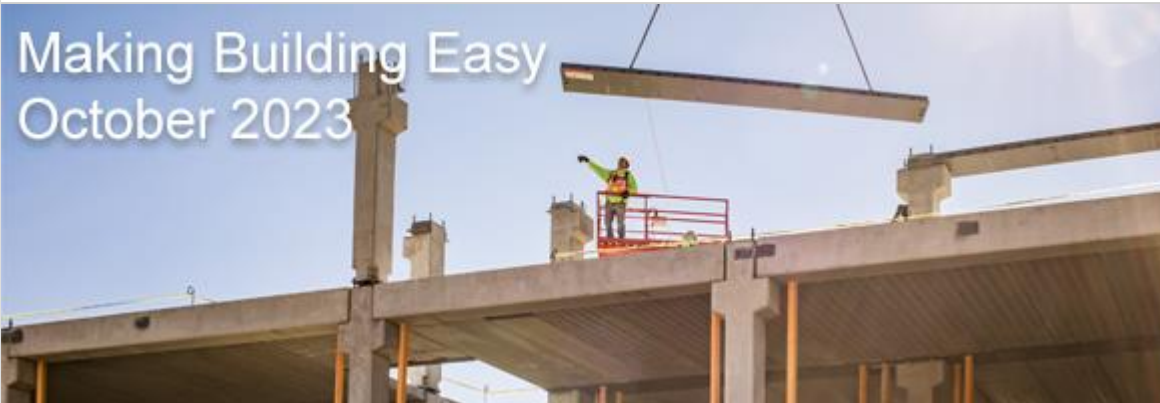


Making Building Easy
October 2023



Precast is the Solution for a Tight Jobsite



When the [Clinton \(Iowa\) Community School District](#) took on a \$66.8 million construction project to create a brand new space for students, it was with big plans.

The multi-phase project includes the demolition of the existing school, with the exception on the gym and pool and a new three-story building, which will house about

75% of the school's academic programming. A technology education center, a performing and fine arts center, and a commons area will connect the old with the new.

Phase 1 - the construction of the new three-story building - was completed in Q1 2023. Students and faculty began occupying the building in March. Phase 2 includes the demolition of the original building from 1919 and construction of the brand-new technology education center and performing and fine arts center. Phase 3 includes the removal of the demolished building, and construction of a new commons, classroom spaces, and offices. The entire project is slated to be completed by 2025.

Mid-States Concrete provided precast concrete for the first two phases of the project, including 4,891 square feet of [hollow core](#) and 225 [wall panels](#).

"Precast provided us an economical building envelope and quick erection time," said Tom Wollan, Partner and Architect with [FRK Architects & Engineers](#). "We did not finish out the inside wall surfaces, so once the wall was up and the joints sealed there was no additional work to be done for the wall system. It also, of course, served as structural support for floors and roofs."

[Keep reading >>](#)

Precast Concrete Provides Quick, Aesthetically Appealing Podium for Building



When the luxury apartments known as [Parkview Lofts](#), in Coralville, Iowa, started the construction process for Parkview II, the construction team knew precast was the way to go for the building's podium.

A common [podium configuration](#) consists of one or more levels of a [hollow core](#), [beam](#)

[and column](#) parking structure below ground with the upper deck, often hollow core, providing both fire separation and structural transfer. In addition to the parking structure below, podium configurations often include an additional story of precast at the ground level for mixed use space, with four or five stories of wood-framed construction above.

"We have kind of a podium construction there for floors of wood frame above the precast and we needed a three-hour fire rating," said Shane Morelock, Project Manager with [Hodge Construction](#), the general contractor on the project. "Precast is really the most economical to reach that and not have to do additional fireproofing, and structurally it works."

The project also utilized [precast concrete walls](#) for the building's elevator shaft and stair shafts. The elevator walls were full height and the stair shaft walls were up to the podium. Morelock acknowledged the benefits of using precast for this, noting that when using precast, haunches are built in and coordinated. This saves time as an additional subcontractor is not needed on site then. The elevator embeds were also cast into the panels, getting that task done ahead of time as well.

[Keep reading >>](#)

Precast Chalk Talk: Episode 48



In this four-part series of Precast Chalk Talk Episode 48, President Hagen Harker talks with our summer interns about the projects they worked on this summer. Interns worked on both the Safety Team and Industrial Engineering Team.

[Watch Episode 48-1 >>](#)

[Watch Episode 48-2 >>](#)

[Watch Episode 48-3 >>](#)

[Watch Episode 48-4 >>](#)

Questions? Comments? Ideas for a future episode? [Email us >>](#)

[Find every episode of Precast Chalk Talk here >>](#)

About Mid-States Concrete Industries

Since 1946, we have produced structural and architectural precast concrete systems that provide our partners with high quality building materials with sustaining performance.

The biggest part of our story is you - our clients. For more than 75 years, you have trusted us to help with your projects. Each project offers its own unique goals and opportunities. We partner with you to find the right solutions for your project.

[Learn more >>](#)



Jeremy Olivotti
Vice President of
Preconstruction

608.751.1474 (c)
800.236.1072 (w)



MID-STATES
CONCRETE INDUSTRIES

[Blog](#) [YouTube](#) [Twitter](#) [LinkedIn](#) [Facebook](#)

500 South Park Ave., South Beloit, IL 61080, United States